

**PUBLIC BENEFIT ENTITY INTERNATIONAL PUBLIC SECTOR ACCOUNTING
STANDARD 32 SERVICE CONCESSION ARRANGEMENTS: GRANTOR
(PBE IPSAS 32)**

Issued September 2014 and incorporates amendments to 31 January 2019 other than consequential amendments resulting from early adoption of PBE IFRS 9 *Financial Instruments* and PBE FRS 48 *Service Performance Reporting*

This Standard was issued on 11 September 2014 by the New Zealand Accounting Standards Board of the External Reporting Board pursuant to section 12(a) of the Financial Reporting Act 2013.

This Standard is a disallowable instrument for the purposes of the Legislation Act 2012, and pursuant to section 27(1) of the Financial Reporting Act 2013 takes effect on 9 October 2014.

Reporting entities that are subject to this Standard are required to apply it in accordance with the effective dates in paragraphs 37.1 to 37.3.

In finalising this Standard, the New Zealand Accounting Standards Board has carried out appropriate consultation in accordance with section 22(1) of the Financial Reporting Act 2013.

This Tier 1 and Tier 2 PBE Standard has been issued as part of a revised full set of PBE Standards that incorporate enhancements for not-for-profit public benefit entities.

This Standard, when applied, supersedes PBE IPSAS 32 *Service Concession Arrangements: Grantor* issued in May 2013.

PBE IPSAS 32 SERVICE CONCESSION ARRANGEMENTS: GRANTOR

COPYRIGHT

© External Reporting Board (XRB) 2014

This XRB standard contains copyright material and reproduces, with the permission of the International Federation of Accountants (IFAC), parts of the corresponding international standard issued by the International Public Sector Accounting Standards Board (IPSASB), and published by IFAC. Reproduction within New Zealand in unaltered form (retaining this notice) is permitted for personal and non-commercial use subject to the inclusion of an acknowledgement of the source.

Requests and enquiries concerning reproduction and rights for commercial purposes within New Zealand should be addressed to the Chief Executive, External Reporting Board at the following email address: enquiries@xrb.govt.nz

All existing rights (including copyrights) in this material outside of New Zealand are reserved by IFAC, with the exception of the right to reproduce for the purposes of personal use or other fair dealing. Further information can be obtained from IFAC at www.ifac.org or by writing to permissions@ifac.org

ISBN 978-1-927292-49-5

**PBE IPSAS 32 SERVICE CONCESSION
ARRANGEMENTS: GRANTOR**

CONTENTS

| | Paragraph |
|---|-----------|
| Objective..... | 1 |
| Scope..... | 2–7 |
| Definitions | 8 |
| Recognition and Measurement of a Service Concession Asset | 9–13 |
| Recognition and Measurement of Liabilities | 14–28 |
| Financial Liability Model | 18–23 |
| Grant of a Right to the Operator Model | 24–26 |
| Dividing the Arrangement..... | 27–28 |
| Other Liabilities, Commitments, Contingent Liabilities, and Contingent Assets | 29 |
| Other Revenues..... | 30 |
| Presentation and Disclosure..... | 31–33 |
| Transitional Provisions | 34–36 |
| Effective Date | 37–37.3 |
| Withdrawal and Replacement of PBE IPSAS 32 (May 2013)..... | 38 |
| Application Guidance | |
| Basis for Conclusions | |
| Implementation Guidance | |
| Illustrative Examples | |
| Comparison with IPSAS 32 | |
| History of Amendments | |

The following is available on the XRB website as additional material:

IPSASB Basis for Conclusions

Public Benefit Entity International Public Sector Accounting Standard 32 *Service Concession Arrangements: Grantor* is set out in paragraphs 1–38 and the Application Guidance. All the paragraphs have equal authority. PBE IPSAS 32 should be read in the context of its objective, the NZASB’s Basis for Conclusions on PBE IPSAS 32, the IPSASB’s Basis for Conclusions on IPSAS 32, the *Public Benefit Entities’ Conceptual Framework* and Standard XRB A1 *Application of the Accounting Standards Framework*. PBE IPSAS 3 *Accounting Policies, Changes in Accounting Estimates and Errors* provides a basis for selecting and applying accounting policies in the absence of explicit guidance.

Objective

1. The objective of this Standard is to prescribe the accounting for service concession arrangements by the grantor, a public benefit entity.

Scope (see paragraphs AG1–AG2)

2. **An entity¹ that prepares and presents financial statements shall apply this Standard in accounting for service concession arrangements.**
- 3–4. [Not used]
- 4.1 **This Standard applies to Tier 1 and Tier 2 public benefit entities.**
5. Arrangements within the scope of this Standard involve the operator providing public services related to the service concession asset on behalf of the grantor.
6. Arrangements outside the scope of this Standard are those that do not involve the delivery of public services and arrangements that involve service and management components where the asset is not controlled by the grantor (e.g., outsourcing, service contracts, or privatisation).
7. This Standard does not specify the accounting by operators (guidance on accounting for service concession arrangements by the operator can be found in PBE FRS 45 *Service Concession Arrangements: Operator*).

Definitions (see paragraphs AG3–AG4)

8. **The following terms are used in this Standard with the meanings specified:**

A **binding arrangement**, for the purposes of this Standard, describes contracts and other arrangements that confer similar rights and obligations on the parties to it as if they were in the form of a contract.

A **grantor**, for the purposes of this Standard, is the entity that grants the right to use the service concession asset to the operator.

An **operator**, for the purposes of this Standard, is the entity that uses the service concession asset to provide public services subject to the grantor's control of the asset.

A **service concession arrangement** is a binding arrangement between a grantor and an operator in which:

- (a) **The operator uses the service concession asset to provide a public service on behalf of the grantor for a specified period of time; and**
- (b) **The operator is compensated for its services over the period of the service concession arrangement.**

A **service concession asset** is an asset used to provide public services in a service concession arrangement that:

- (a) **Is provided by the operator which:**
 - (i) **The operator constructs, develops, or acquires from a third party; or**
 - (ii) **Is an existing asset of the operator; or**
- (b) **Is provided by the grantor which:**
 - (i) **Is an existing asset of the grantor; or**
 - (ii) **Is an upgrade to an existing asset of the grantor.**

Terms defined in other PBE Standards are used in this Standard with the same meaning as in those Standards, and are reproduced in the *Glossary of Defined Terms* published separately.

¹ An entity for the purposes of this Standard is referred to as the grantor.

Recognition and Measurement of a Service Concession Asset (see paragraphs AG5–AG35)

9. **The grantor shall recognise an asset provided by the operator and an upgrade to an existing asset of the grantor as a service concession asset if:**
 - (a) **The grantor controls or regulates what services the operator must provide with the asset, to whom it must provide them, and at what price; and**
 - (b) **The grantor controls—through ownership, beneficial entitlement or otherwise—any significant residual interest in the asset at the end of the term of the arrangement.**
10. **This Standard applies to an asset used in a service concession arrangement for its entire useful life (a “whole-of-life” asset) if the conditions in paragraph 9(a) are met.**
11. **The grantor shall initially measure the service concession asset recognised in accordance with paragraph 9 (or paragraph 10 for a whole-of-life asset) at its fair value, except as noted in paragraph 12.**
12. **Where an existing asset of the grantor meets the conditions specified in paragraph 9(a) and 9(b) (or paragraph 10 for a whole-of-life asset), the grantor shall reclassify the existing asset as a service concession asset. The reclassified service concession asset shall be accounted for in accordance with PBE IPSAS 17 *Property, Plant and Equipment* or PBE IPSAS 31 *Intangible Assets*, as appropriate.**
13. **After initial recognition or reclassification, service concession assets shall be accounted for in accordance with PBE IPSAS 17 or PBE IPSAS 31, as appropriate.**

Recognition and Measurement of Liabilities (see paragraphs AG36–AG50)

14. **Where the grantor recognises a service concession asset in accordance with paragraph 9 (or paragraph 10 for a whole-of-life asset), the grantor shall also recognise a liability. The grantor shall not recognise a liability when an existing asset of the grantor is reclassified as a service concession asset in accordance with paragraph 12, except in circumstances where additional consideration is provided by the operator, as noted in paragraph 15.**
15. **The liability recognised in accordance with paragraph 14 shall be initially measured at the same amount as the service concession asset measured in accordance with paragraph 11, adjusted by the amount of any other consideration (e.g., cash) from the grantor to the operator, or from the operator to the grantor.**
16. **The nature of the liability recognised is based on the nature of the consideration exchanged between the grantor and the operator. The nature of the consideration given by the grantor to the operator is determined by reference to the terms of the binding arrangement and, when relevant, contract law.**
17. **In exchange for the service concession asset, the grantor may compensate the operator for the service concession asset by any combination of:**
 - (a) **Making payments to the operator (the “financial liability” model);**
 - (b) **Compensating the operator by other means (the “grant of a right to the operator” model) such as:**
 - (i) **Granting the operator the right to earn revenue from third-party users of the service concession asset; or**
 - (ii) **Granting the operator access to another revenue-generating asset for the operator’s use (e.g., a private wing of a hospital where the remainder of the hospital is used by the grantor to treat public patients or a private parking facility adjacent to a public facility).**

Financial Liability Model (see paragraphs AG37–AG46)

18. **Where the grantor has an unconditional obligation to pay cash or another financial asset to the operator for the construction, development, acquisition, or upgrade of a service concession asset, the grantor shall account for the liability recognised in accordance with paragraph 14 as a financial liability.**

19. The grantor has an unconditional obligation to pay cash if it has guaranteed to pay the operator:
 - (a) Specified or determinable amounts; or
 - (b) The shortfall, if any, between amounts received by the operator from users of the public service and any specified or determinable amounts referred to in paragraph 19(a), even if the payment is contingent on the operator ensuring that the service concession asset meets specified quality or efficiency requirements.
20. PBE IPSAS 28 *Financial Instruments: Presentation*, the derecognition requirements in PBE IPSAS 29 *Financial Instruments: Recognition and Measurement*, and PBE IPSAS 30 *Financial Instruments: Disclosures* apply to the financial liability recognised under paragraph 14, except where this Standard provides requirements and guidance.
21. **The grantor shall allocate the payments to the operator and account for them according to their substance as a reduction in the liability recognised in accordance with paragraph 14, a finance charge, and charges for services provided by the operator.**
22. **The finance charge and charges for services provided by the operator in a service concession arrangement determined in accordance with paragraph 21 shall be accounted for as expenses.**
23. **Where the asset and service components of a service concession arrangement are separately identifiable, the service components of payments from the grantor to the operator shall be allocated by reference to the relative fair values of the service concession asset and the services. Where the asset and service components are not separately identifiable, the service component of payments from the grantor to the operator is determined using estimation techniques.**

Grant of a Right to the Operator Model (see paragraphs AG47–AG49)

24. **Where the grantor does not have an unconditional obligation to pay cash or another financial asset to the operator for the construction, development, acquisition, or upgrade of a service concession asset, and grants the operator the right to earn revenue from third-party users or another revenue-generating asset, the grantor shall account for the liability recognised in accordance with paragraph 14 as the unearned portion of the revenue arising from the exchange of assets between the grantor and the operator.**
25. **The grantor shall recognise revenue and reduce the liability recognised in accordance with paragraph 24 according to the economic substance of the service concession arrangement.**
26. Where the grantor compensates the operator for the service concession asset and the provision of services by granting the operator the right to earn revenue from third-party users of the service concession asset or another revenue-generating asset, the exchange is regarded as a transaction that generates revenue. As the right granted to the operator is effective for the period of the service concession arrangement, the grantor does not recognise revenue from the exchange immediately. Instead, a liability is recognised for any portion of the revenue that is not yet earned. The revenue is recognised according to the economic substance of the service concession arrangement, and the liability is reduced as revenue is recognised.

Dividing the Arrangement (see paragraph AG50)

27. **If the grantor pays for the construction, development, acquisition, or upgrade of a service concession asset partly by incurring a financial liability and partly by the grant of a right to the operator, it is necessary to account separately for each part of the total liability recognised in accordance with paragraph 14. The amount initially recognised for the total liability shall be the same amount as that specified in paragraph 15.**
28. **The grantor shall account for each part of the liability referred to in paragraph 27 in accordance with paragraphs 18–26.**

Other Liabilities, Commitments, Contingent Liabilities and Contingent Assets (see paragraphs AG51–AG54)

29. **The grantor shall account for other liabilities, commitments, contingent liabilities, and contingent assets arising from a service concession arrangement in accordance with PBE IPSAS 19 *Provisions, Contingent Liabilities and Contingent Assets*, PBE IPSAS 28, PBE IPSAS 29 and PBE IPSAS 30.**

Other Revenues (see paragraphs AG55–AG64)

30. The grantor shall account for revenues from a service concession arrangement, other than those specified in paragraphs 24–26, in accordance with PBE IPSAS 9 *Revenue from Exchange Transactions*.

Presentation and Disclosure (see paragraphs AG65–AG67)

31. The grantor shall present information in accordance with PBE IPSAS 1 *Presentation of Financial Statements*.
32. All aspects of a service concession arrangement shall be considered in determining the appropriate disclosures in the notes. A grantor shall disclose the following information in respect of service concession arrangements in each reporting period:
- (a) A description of the arrangement;
 - (b) Significant terms of the arrangement that may affect the amount, timing, and certainty of future cash flows (e.g., the period of the concession, re-pricing dates, and the basis upon which re-pricing or re-negotiation is determined);
 - (c) The nature and extent (e.g., quantity, time period, or amount, as appropriate) of:
 - (i) Rights to use specified assets;
 - (ii) Rights to expect the operator to provide specified services in relation to the service concession arrangement;
 - (iii) The carrying amount of service concession assets recognised at the end of the reporting period, including existing assets of the grantor reclassified as service concession assets;
 - (iv) Rights to receive specified assets at the end of the service concession arrangement;
 - (v) Renewal and termination options;
 - (vi) Other rights and obligations (e.g., major overhaul of service concession assets); and
 - (vii) Obligations to provide the operator with access to service concession assets or other revenue-generating assets; and
 - (d) Changes in the arrangement occurring during the reporting period.
33. The disclosures required in accordance with paragraph 32 are provided individually for each material service concession arrangement or in aggregate for service concession arrangements involving services of a similar nature (e.g., toll collections, telecommunications or water treatment services). This disclosure is in addition to the disclosures required in PBE IPSAS 17 and/or PBE IPSAS 31 by class of assets. Service concession assets within service concession arrangements of a similar nature that are reported in aggregate may form a subset of a class of assets disclosed in accordance with PBE IPSAS 17 and/or PBE IPSAS 31 or may be included in more than one class of assets disclosed in accordance with PBE IPSAS 17 and/or PBE IPSAS 31. For example, for the purposes of PBE IPSAS 17 a toll bridge may be included in the same class as other bridges. For the purposes of this paragraph, the toll bridge may be included with service concession arrangements reported in aggregate as toll roads.

Transitional Provisions

34–35. [Not used]

- 35A. Paragraphs 13, 32, 33 and AG35 were amended by *2016 Omnibus Amendments to PBE Standards* issued in January 2017. An entity that has previously applied PBE IPSAS 32 shall reassess the classification of service concession assets in accordance with paragraph 13. The entity shall present service concession assets in the revised classification retrospectively in accordance with PBE IPSAS 3 *Accounting Policies, Changes in Accounting Estimates and Errors*.
- 35B. Where service concessions assets are reclassified in accordance with paragraph 35A, an entity shall account for the service concession assets as follows:
- (a) If the service concession assets have previously been measured using the cost model, and the class of assets to which those service concession assets have been reclassified is measured using the cost

model, the entity shall continue to apply the cost model, the entity shall carry forward the cost of the service concession assets, along with any accumulated depreciation or amortisation and any accumulated impairment losses.

- (b) If the service concession assets have previously been measured using the cost model, and the class of assets to which those service concession assets have been reclassified is measured using the revaluation model, the entity shall either:
- (i) Revalue the service concession assets; or
 - (ii) Subject to the requirements in PBE IPSAS 3 dealing with changes in accounting policies, retrospectively apply the cost model to the remaining assets in the class of asset to which those service concession assets have been reclassified. Where information regarding the cost of the assets is not available, the entity may use the carrying amount of the assets as the deemed cost.
- (c) If the service concession assets have previously been measured using the revaluation model, and the class of assets to which those service concession assets have been reclassified is measured using the cost model, the entity shall either:
- (i) Retrospectively apply the cost model to the service concession assets. Where information regarding the cost of the assets is not available, the entity may use the carrying amount of the service concession assets as the deemed cost; or
 - (ii) Subject to the requirements in PBE IPSAS 3 dealing with changes in accounting policies, revalue the remaining assets in the class of asset to which those service concession assets have been reclassified.
- (d) If the service concession assets have previously been measured using the revaluation model, and the class of assets to which those service concession assets have been reclassified is measured using the revaluation model, the entity shall adjust the revaluation surplus in respect of each class of asset. Where previous revaluation decreases have been recognised in respect of either a service concession asset or one or more assets in the class to which the service concession asset is transferred, the entity shall consider whether transfers between revaluation surplus and accumulated comprehensive revenue and expense are required.

36. [Not used]

Effective Date

37. [Not used]

37.1 **A public benefit entity shall apply this Standard for annual financial statements covering periods beginning on or after 1 April 2015. Earlier application is permitted for not-for-profit public benefit entities as long as the full suite of PBE Standards is applied at the same time.**

37.2 ***2016 Omnibus Amendments to PBE Standards*, issued in January 2017, added a footnote to paragraph AG20. An entity shall apply that amendment for annual financial statements covering periods beginning on or after 1 January 2017.**

37.3 ***2016 Omnibus Amendments to PBE Standards*, issued in January 2017, amended paragraphs 13, 32, 33 and AG35 and added paragraphs 35A and 35B. An entity shall apply those amendments for annual financial statements covering periods beginning on or after 1 January 2017. Earlier application is permitted. If an entity applies those amendments for an earlier period it shall disclose that fact.**

37.4 [See PBE IFRS 9 *Financial Instruments*.]

Withdrawal and Replacement of PBE IPSAS 32 (May 2013)

38. This Standard, when applied, supersedes PBE IPSAS 32 *Service Concession Arrangements: Grantor* issued in May 2013.

Application Guidance

This Appendix is an integral part of PBE IPSAS 32.

Scope (see paragraphs 2–7)

- AG1. This Standard is intended to “mirror” PBE FRS 45 *Service Concession Arrangements: Operator* and NZ IFRIC 12 *Service Concession Arrangements* which set out the accounting requirements for the public benefit entity operator in a service concession arrangement. To do so, the scope, principles for recognition of an asset, and terminology are consistent with the applicable guidance in PBE FRS 45 and NZ IFRIC 12. However, because this Standard deals with the accounting issues of the grantor, this Standard addresses the issues identified in PBE FRS 45 and NZ IFRIC 12 from the grantor’s point of view, as follows:
- (a) The grantor recognises a financial liability when it is obliged to make a series of payments to the operator for provision of a service concession asset (i.e., constructed, developed, acquired, or upgraded). Using the measurement requirements specified in this Standard under paragraphs 10, 12, and 18 of PBE FRS 45 and paragraphs 12, 14, and 20 of NZ IFRIC 12, the operator recognises revenue for the construction, development, acquisition, upgrade, and operation services it provides. Under paragraph 7 of PBE FRS 45 and paragraph 8 of NZ IFRIC 12, the operator derecognises an asset that it held and recognised as property, plant and equipment before entering the service concession arrangement.
 - (b) The grantor recognises a liability when it grants the operator the right to earn revenue from third-party users of the service concession asset or another revenue-generating asset. Under paragraph 24 of PBE FRS 45 and paragraph 26 of NZ IFRIC 12, the operator recognises an intangible asset.
 - (c) The grantor derecognises an asset it grants to the operator and over which it no longer has control. Under paragraph 25 of PBE FRS 45 and paragraph 27 of NZ IFRIC 12, the operator recognises the asset and a liability in respect of any obligations it has assumed in exchange for the asset.
- AG2. Paragraph 9 of this Standard specifies the conditions under which an asset, other than a whole-of-life asset, is within the scope of the Standard. Paragraph 10 of the Standard specifies the condition under which whole-of-life assets are within the scope of the Standard.

Definitions (see paragraph 8)

- AG3. Paragraph 8 defines a service concession arrangement. Common features of a service concession arrangement are:
- (a) The grantor is a public benefit entity;
 - (b) The operator is responsible for at least some of the management of the service concession asset and related services and does not merely act as an agent on behalf of the grantor;
 - (c) The arrangement sets the initial prices to be levied by the operator and regulates price revisions over the period of the service concession arrangement;
 - (d) The operator is obliged to hand over the service concession asset to the grantor in a specified condition at the end of the period of the arrangement, for little or no incremental consideration, irrespective of which party initially financed it; and
 - (e) The arrangement is governed by a binding arrangement that sets out performance standards, mechanisms for adjusting prices, and arrangements for arbitrating disputes.
- AG4. Paragraph 8 defines a service concession asset. Examples of service concession assets are: roads, bridges, tunnels, prisons, hospitals, airports, water distribution facilities, energy supply and telecommunication networks, permanent installations for military and other operations, and other non-current tangible or intangible assets used for administrative purposes in delivering public services.

Recognition and Initial Measurement of a Service Concession Asset (see paragraphs 9–13)*Recognition of a Service Concession Asset*

- AG5. The assessment of whether a service concession asset should be recognised in accordance with paragraph 9 (or paragraph 10 for a whole-of-life asset) is made on the basis of all of the facts and circumstances of the arrangement.
- AG6. The control or regulation referred to in paragraph 9(a) could be by a binding arrangement, or otherwise (such as through a third party regulator that regulates other entities that operate in the same industry or sector as the grantor), and includes circumstances in which the grantor buys all of the output as well as those in which some or all of the output is bought by other users. The ability to exclude or regulate the access of others to the benefits of an asset is an essential element of control that distinguishes an entity's assets from those public goods that all entities have access to and benefit from. The binding arrangement sets the initial prices to be levied by the operator and regulates price revisions over the period of the service concession arrangement. When the binding arrangement conveys the right to control the use of the service concession asset to the grantor, the asset meets the condition specified in paragraph 9(a) regarding control in relation to those to whom the operator must provide services.
- AG7. For the purpose of paragraph 9(a), the grantor does not need to have complete control of the price: it is sufficient for the price to be regulated by the grantor, binding arrangement, or a third party regulator that regulates other entities that operate in the same industry or sector (e.g., hospitals, schools, or universities) as the grantor (e.g., by a capping mechanism). However, the condition is applied to the substance of the agreement. Non-substantive features, such as a cap that will apply only in remote circumstances, are ignored. Conversely, if, for example, an arrangement purports to give the operator freedom to set prices, but any excess profit is returned to the grantor, the operator's return is capped and the price element of the control test is met.
- AG8. Many governments have the power to regulate the behaviour of entities operating in certain sectors of the economy, either directly, or through specifically created agencies. For the purpose of paragraph 9(a), the broad regulatory powers described above do not constitute control. In this Standard, the term "regulate" is intended to be applied only in the context of the specific terms and conditions of the service concession arrangement. For example, a regulator of rail services may determine rates that apply to the rail industry as a whole. Depending on the legal framework in a jurisdiction, such rates may be implicit in the binding arrangement governing a service concession arrangement involving the provision of railway transportation, or they may be specifically referred to therein. However, in both cases, the control of the service concession asset is derived from either the contract, or similar binding arrangement, or from the specific regulation applicable to rail services and not from the fact that the grantor is a public sector entity that is related to the regulator of rail service.
- AG9. For the purpose of paragraph 9(b), the grantor's control over any significant residual interest should both restrict the operator's practical ability to sell or pledge the asset and give the grantor a continuing right of use throughout the period of the service concession arrangement. The residual interest in the asset is the estimated current value of the asset as if it were already of the age and in the condition expected at the end of the period of the service concession arrangement.
- AG10. Control should be distinguished from management. If the grantor retains both the degree of control described in paragraph 9(a) and any significant residual interest in the asset, the operator is only managing the asset on the grantor's behalf—even though, in many cases, it may have wide managerial discretion.
- AG11. The conditions in paragraphs 9(a) and 9(b) together identify when the asset, including any replacements required, is controlled by the grantor for the whole of its economic life. For example, if the operator has to replace part of an asset during the period of the arrangement (e.g., the top layer of a road or the roof of a building), the asset is considered as a whole. Thus the condition in paragraph 9(b) is met for the whole of the asset, including the part that is replaced, if the grantor controls any significant residual interest in the final replacement of that part.
- AG12. Sometimes the use of a service concession asset is partly regulated in the manner described in paragraph 9(a) and partly unregulated. However, these arrangements take a variety of forms:
- (a) Any asset that is physically separable and capable of being operated independently and meets the definition of a cash-generating unit as defined in PBE IPSAS 26 *Impairment of Cash-Generating Assets* is analysed separately to determine whether the condition set out in paragraph 9(a) is met if

it is used wholly for unregulated purposes (e.g., this might apply to a private wing of a hospital, where the remainder of the hospital is used by the grantor to treat public patients); and

- (b) When purely ancillary activities (such as a hospital shop) are unregulated, the control tests are applied as if those services did not exist, because in cases in which the grantor controls the services in the manner described in paragraph 9(a), the existence of ancillary activities does not detract from the grantor's control of the service concession asset.

AG13. The operator may have a right to use the separable asset described in paragraph AG12(a), or the facilities used to provide ancillary unregulated services described in paragraph AG12(b). In either case, there may in substance be a lease from the grantor to the operator; if so, it is accounted for in accordance with PBE IPSAS 13.

Existing Asset of the Grantor

AG14. The arrangement may involve an existing asset of the grantor:

- (a) To which the grantor gives the operator access for the purpose of the service concession arrangement; or
- (b) To which the grantor gives the operator access for the purpose of generating revenues as compensation for the service concession asset.

AG15. The requirement in paragraph 11 is to measure assets recognised in accordance with paragraph 9 (or paragraph 10 for a whole-of-life asset) initially at fair value. Existing assets of the grantor used in the service concession arrangement are reclassified rather than recognised under this Standard. Only an upgrade to an existing asset of the grantor (e.g., that increases its capacity) is recognised as a service concession asset in accordance with paragraph 9, or paragraph 10 for a whole-of-life asset).

AG16. In applying the impairment tests in PBE IPSAS 17 or PBE IPSAS 31, as appropriate, the grantor does not necessarily consider the granting of the service concession to the operator as a circumstance that causes impairment, unless there has been a change in use of the asset that affects its future economic benefits or service potential. The grantor refers to PBE IPSAS 21 *Impairment of Non-Cash-Generating Assets* or PBE IPSAS 26, as appropriate, to determine whether any of the indicators of impairment have been triggered under such circumstances.

AG17. If the asset no longer meets the conditions for recognition in paragraph 9 (or paragraph 10 for a whole-of-life asset), the grantor follows the derecognition principles in PBE IPSAS 17 or PBE IPSAS 31, as appropriate. For example, if the asset is transferred to the operator on a permanent basis, it is derecognised. If the asset is transferred on a temporary basis, the grantor considers the substance of this term of the service concession arrangement in determining whether the asset should be derecognised. In such cases, the grantor also considers whether the arrangement is a lease transaction or a sale and leaseback transaction that should be accounted for in accordance with PBE IPSAS 13.

AG18. When the service concession arrangement involves upgrading an existing asset of the grantor such that the future economic benefits or service potential the asset will provide are increased, the upgrade is assessed to determine whether it meets the conditions for recognition in paragraph 9 (or paragraph 10 for a whole-of-life asset). If those conditions are met, the upgrade is recognised and measured in accordance with this Standard.

Existing Asset of the Operator

AG19. The operator may provide an asset for use in the service concession arrangement that it has not constructed, developed, or acquired. If the arrangement involves an existing asset of the operator which the operator uses for the purpose of the service concession arrangement, the grantor determines whether the asset meets the conditions in paragraph 9 (or paragraph 10 for a whole-of-life asset). If the conditions for recognition are met, the grantor recognises the asset as a service concession asset and accounts for it in accordance with this Standard.

Constructed or Developed Asset

AG20. Where a constructed or developed asset meets the conditions in paragraph 9 (or paragraph 10 for a whole-of-life asset) the grantor recognises and measures the asset in accordance with this Standard. PBE IPSAS 17 or PBE IPSAS 31, as appropriate, set out the criteria for when a service concession asset

should be recognised. Both PBE IPSAS 17 and PBE IPSAS 31 require that an asset shall be recognised if, and only if:

- (a) It is probable that future economic benefits or service potential associated with the item will flow to the entity; and
- (b) The cost or fair value of the item can be measured reliably.²

- AG21. Those criteria, together with the specific terms and conditions of the binding arrangement, need to be considered in determining whether to recognise the service concession asset during the period in which the asset is constructed or developed. For both property, plant and equipment and intangible assets, the recognition criteria may be met during the construction or development period, and, if so, the grantor will normally recognise the service concession asset during that period.
- AG22. The first recognition criterion requires the flow of economic benefits or service potential to the grantor. From the grantor's point of view, the primary purpose of a service concession asset is to provide service potential on behalf of the public benefit grantor. Similar to an asset the grantor constructs or develops for its own use, the grantor would assess, at the time the costs of construction or development are incurred, the terms of the binding arrangement to determine whether the service potential of the service concession asset would flow to the grantor at that time.
- AG23. The second recognition criterion requires that the initial cost or fair value of the asset can be measured reliably. Accordingly, to meet the recognition criteria in PBE IPSAS 17 or PBE IPSAS 31, as appropriate, the grantor must have reliable information about the cost or fair value of the asset during its construction or development. For example, if the service concession arrangement requires the operator to provide the grantor with progress reports during the asset's construction or development, the costs incurred may be measurable, and would therefore meet the recognition principle in PBE IPSAS 17 for constructed assets or in PBE IPSAS 31 for developed assets. Also, where the grantor has little ability to avoid accepting an asset constructed or developed to meet the specifications of the contract, or a similar binding arrangement, the costs are recognised as progress is made towards completion of the asset. Thus, the grantor recognises a service concession asset and an associated liability.

Measurement of Service Concession Assets

- AG24. Paragraph 11 requires service concession assets recognised in accordance with paragraph 9 (or paragraph 10 for a whole-of-life asset) to be measured initially at fair value. In particular, fair value is used to determine the cost of a constructed or developed service concession asset or the cost of any upgrades to existing assets, on initial recognition. The requirement in paragraph 11 does not apply to existing assets of the grantor that are reclassified as service concession assets in accordance with paragraph 12 of this Standard. The use of fair value on initial recognition does not constitute a revaluation under PBE IPSAS 17 or PBE IPSAS 31.
- AG25. The type of compensation exchanged between the grantor and the operator affects how the fair value of the service concession asset is determined on initial recognition. The paragraphs that follow outline how to determine the fair value of the asset on initial recognition based on the type of compensation exchanged:
- (a) Where payments are made by the grantor to the operator, the fair value on initial recognition of the asset represents the portion of the payments paid to the operator for the asset.
 - (b) Where the grantor does not make payments to the operator for the asset, the asset is accounted for in the same way as an exchange of non-monetary assets in PBE IPSAS 17 and PBE IPSAS 31.

Types of Compensation

- AG26. Service concession arrangements are rarely if ever the same; technical requirements vary by sector and by jurisdiction. Furthermore, the terms of the arrangement may also depend on the specific features of the overall legal framework of the particular jurisdiction. Contract laws, where they exist, may contain terms that do not have to be repeated in individual contracts.

² Information that is reliable is free from material error and bias, and can be depended on by users to faithfully represent that which it purports to represent or could reasonably be expected to represent. Paragraph BC10 of PBE IPSAS 1 *Presentation of Financial Statements* discusses the transitional approach to the explanation of reliability.

AG27. Depending on the terms of the service concession arrangement, the grantor may compensate the operator for the service concession asset and service provision by any combination of the following:

- (a) Making payments (e.g., cash) to the operator;
- (b) Compensating the operator by other means, such as:
 - (i) Granting the operator the right to earn revenue from third-party users of the service concession asset; or
 - (ii) Granting the operator access to another revenue-generating asset for its use.

AG28. Where the grantor compensates the operator for the service concession asset by making payments to the operator, the asset and service components of the payments may be separable (e.g., the binding arrangement specifies the amount of the predetermined series of payments to be allocated to the service concession asset) or inseparable.

Separable Payments

AG29. A service concession arrangement may be separable in a variety of circumstances, including, but not limited to, the following:

- (a) Part of a payment stream that varies according to the availability of the service concession asset itself and another part that varies according to usage or performance of certain services are identified;
- (b) Different components of the service concession arrangement run for different periods or can be terminated separately. For example, an individual service component can be terminated without affecting the continuation of the rest of the arrangement; or
- (c) Different components of the service concession arrangement can be renegotiated separately. For example, a service component is market tested and some or all of the cost increases or reductions are passed on to the grantor in such a way that the part of the payment by the grantor that relates specifically to that service can be identified.

AG30. PBE IPSAS 17 and PBE IPSAS 31 require initial measurement of an asset acquired in an exchange transaction at cost, which is the cash price equivalent of the asset. For exchange transactions, the transaction price is considered to be fair value, unless indicated otherwise. Where the asset and service components of payments are separable, the cash price equivalent of the service concession asset is the present value of the service concession asset component of the payments. However, if the present value of the asset portion of the payments is greater than fair value, the service concession asset is initially measured at its fair value.

Inseparable Payments

AG31. Where the asset and service component of payments by the grantor to the operator are not separable, the fair value in paragraph 11 is determined using estimation techniques.

AG32. For the purpose of applying the requirements of this Standard, payments and other consideration required by the arrangement are allocated at the inception of the arrangement or upon a reassessment of the arrangement into those for the service concession asset and those for other components of the service concession arrangement (e.g., maintenance and operation services) on the basis of their relative fair values. The fair value of the service concession asset includes only amounts related to the asset and excludes amounts for other components of the service concession arrangement. In some cases, allocating the payments for the asset from payments for other components of the service concession arrangement will require the grantor to use an estimation technique. For example, a grantor may estimate the payments related to the asset by reference to the fair value of a comparable asset in an agreement that contains no other components, or by estimating the payments for the other components in the service concession arrangement by reference to comparable arrangements and then deducting these payments from the total payments under the arrangement.

Operator Receives Other Forms of Compensation

AG33. The types of transactions referred to in paragraph 17(b) are non-monetary exchange transactions. Paragraph 38 of PBE IPSAS 17 and paragraph 44 of PBE IPSAS 31, as appropriate, provide guidance on these circumstances.

AG34. When the operator is granted the right to earn revenue from third-party users of the service concession asset, or another revenue-generating asset, or receives non-cash compensation from the grantor, the grantor does not incur a cost directly for acquiring the service concession asset. These forms of compensation to the operator are intended to compensate the operator both for the cost of the service concession asset and for operating it during the term of the service concession arrangement. The grantor therefore needs to initially measure the asset component in a manner consistent with paragraph 11.

Subsequent Measurement

AG35. After initial recognition, a grantor applies PBE IPSAS 17 and PBE IPSAS 31 to the subsequent measurement and derecognition of a service concession asset. PBE IPSAS 21 and PBE IPSAS 26 are also applied in considering whether there is any indication that a service concession asset is impaired. These requirements in these Standards are applied to all assets recognised or classified as service concession assets in accordance with this Standard.

Recognition and Measurement of Liabilities (see paragraphs 14–28)

AG36. The grantor recognises a liability in accordance with paragraph 14 only when a service concession asset is recognised in accordance with paragraph 9 (or paragraph 10 for a whole-of-life asset). The nature of the liability recognised in accordance with paragraph 14 differs in each of the circumstances described in paragraph AG25 according to its substance.

The Financial Liability Model (see paragraphs 18–23)

AG37. When the grantor has an unconditional obligation to make a predetermined series of payments to the operator, the liability is a financial liability as defined in PBE IPSAS 29. The grantor has an unconditional obligation if it has little, if any, discretion to avoid the obligation usually because of the binding arrangement with the operator being enforceable by law.

AG38. When the grantor provides compensation to the operator for the cost of the service concession asset and service provision in the form of a predetermined series of payments, an amount reflecting the portion of the predetermined series of payments that pertains to the asset is recognised as a liability in accordance with paragraph 14. This liability does not include the finance charge and service components of the payments specified in paragraph 21.

AG39. Where the grantor makes any payments to the operator in advance of the service concession asset being recognised, the grantor accounts for those payments as prepayments.

AG40. The finance charge specified in paragraph 21 is determined based on the operator's cost of capital specific to the service concession asset, if this is practicable to determine.

AG41. If the operator's cost of capital specific to the service concession asset is not practicable to determine, the rate implicit in the arrangement specific to the service concession asset, the grantor's incremental borrowing rate, or another rate appropriate to the terms and conditions of the arrangement, is used.

AG42. Where sufficient information is not available, the rate used to determine the finance charge may be estimated by reference to the rate that would be expected on acquiring a similar asset (e.g., a lease of a similar asset, in a similar location and for a similar term). The estimate of the rate should be reviewed together with:

- (a) The present value of the payments;
- (b) The assumed fair value of the asset; and
- (c) The assumed residual value, to ensure all figures are reasonable and mutually consistent.

AG43. In cases when the grantor takes part in the financing (e.g., by lending the operator the funds to construct, develop, acquire, or upgrade a service concession asset, or through guarantees), it may be appropriate to use the grantor's incremental borrowing rate to determine the finance charge.

AG44. The interest rate used to determine the finance charge may not be subsequently changed unless the asset component or the whole of the arrangement is renegotiated.

AG45. The finance charge related to the liability in a service concession arrangement is presented consistently with other finance charges in accordance with PBE IPSAS 28, PBE IPSAS 29 and PBE IPSAS 30.

AG46. The service component of payments determined in accordance with paragraph 21 is ordinarily recognised evenly over the term of the service concession arrangement because this pattern of recognition best corresponds to the service provision. In cases when specific expenses are required to be separately compensated, and their timing is known, such expenses are recognised as incurred.

Grant of a Right to the Operator Model (see paragraphs 24–26)

AG47. When the grantor compensates the operator for the service concession asset and service provision by granting the operator the right to earn revenue from third-party users of the service concession asset, the operator is granted the right to earn revenue over the period of the service concession arrangement. Likewise, the grantor earns the benefit associated with the assets received in the service concession arrangement in exchange for the right granted to the operator over the period of the arrangement. Accordingly, the revenue is not recognised immediately. Instead, a liability is recognised for any portion of the revenue that is not yet earned. Revenue is recognised and the liability reduced in accordance with paragraph 25 based on the economic substance of the service concession arrangement, usually as access to the service concession asset is provided to the operator over the term of the service concession arrangement. As described in paragraph AG27, the grantor may compensate the operator by a combination of payments and granting a right to earn revenue directly from third-party users. In such cases, if the operator's right to earn such third-party revenues significantly reduces or eliminates the grantor's predetermined series of payments to the operator, another basis may be more appropriate for reducing the liability (e.g., the term over which the grantor's future predetermined series of payments are reduced or eliminated).

AG48. When the grantor compensates the operator for the service concession asset and service by the provision of a revenue-generating asset, other than the service concession asset, revenue is recognised and the liability recognised in accordance with paragraph 24 is reduced in a manner similar to that described in paragraph AG47. In such cases, the grantor also considers the derecognition requirements in PBE IPSAS 17 or PBE IPSAS 31, as appropriate.

AG49. In some cases under the grant of a right to the operator model, there may be a "shadow toll". Some shadow tolls are paid for the construction, development, acquisition, or upgrade of the service concession asset, and its operation by the operator. In cases where the grantor pays the operator solely for the usage of the service concession asset by third-party users, such payment is compensation in exchange for the usage and not the acquisition of the service concession asset. Accordingly, such payments do not relate to the liability specified in paragraph AG48. The grantor compensates the operator only to the extent of the usage of the service concession asset, and accounts for such payments as expenses in accordance with PBE IPSAS 1 *Presentation of Financial Statements*.

Dividing the Arrangement (see paragraphs 27–28)

AG50. If the operator is compensated for the service concession asset partly by a predetermined series of payments and partly by receiving the right to earn revenue from third-party use of either the service concession asset or another revenue-generating asset, it is necessary to account separately for each portion of the liability related to the grantor's consideration. In these circumstances, the consideration to the operator is divided into a financial liability portion for the predetermined series of payments and a liability portion for the right granted to the operator to earn revenue from third-party use of the service concession asset or another revenue-generating asset. Each portion of the liability is recognised initially at the fair value of the consideration paid or payable.

Other Liabilities, Commitments, Contingent Liabilities and Contingent Assets (see paragraph 29)

AG51. Service concession arrangements may include various forms of financial guarantees (e.g., a guarantee, security, or indemnity related to the debt incurred by the operator to finance construction, development, acquisition, or upgrade of a service concession asset), or performance guarantees (e.g., guarantee of minimum revenue streams, including compensation for short-falls).

AG52. Certain guarantees made by a grantor may meet the definition of a financial guarantee contract. The grantor determines whether guarantees made by the grantor as part of a service concession arrangement meet the definition of a financial guarantee contract and applies PBE IPSAS 28, PBE IPSAS 29 and PBE IPSAS 30 in accounting for the guarantee. Where the guarantee is an insurance contract, the grantor can elect to apply PBE IFRS 4 *Insurance Contracts*. See PBE IPSAS 28, paragraphs AG3–AG9 for further guidance.

- AG53. Guarantees and commitments that do not meet the requirements in PBE IPSAS 28 and PBE IPSAS 29 relating to financial guarantee contracts or are not insurance contracts are accounted for in accordance with PBE IPSAS 19.
- AG54. Contingent assets or liabilities may arise from disputes over the terms of the service concession arrangement. Such contingencies are accounted for in accordance with PBE IPSAS 19.

Other Revenues (see paragraph 30)

- AG55. The operator may compensate the grantor for access to the service concession asset by providing the grantor with a series of predetermined inflows of resources, including the following:
- (a) An upfront payment or a stream of payments;
 - (b) Revenue-sharing provisions;
 - (c) A reduction in a predetermined series of payments the grantor is required to make to the operator; and
 - (d) Rent payments for providing the operator access to a revenue-generating asset.
- AG56. When the operator provides an upfront payment, a stream of payments, or other consideration to the grantor for the right to use the service concession asset over the term of the service concession arrangement, the grantor accounts for these payments in accordance with PBE IPSAS 9. The timing of the revenue recognition is determined by the terms and conditions of the service concession arrangement that specify the grantor's obligation to provide the operator with access to the service concession asset.
- AG57. Where the operator provides an upfront payment, a stream of payments, or other consideration to the grantor in addition to the service concession asset, for the right to earn the revenue from third-party use of the service concession asset, or another revenue-generating asset, any portion of the payments received from the operator not earned in the accounting period is recognised as a liability until the conditions for revenue recognition are met.
- AG58. When the conditions for revenue recognition are met, the liability is reduced as the revenue is recognised in accordance with paragraph 30.
- AG59. However, given the varying nature of the types of assets that may be used in service concession arrangements, and the number of years over which the arrangements operate, there may be more appropriate alternative methods for recognising revenue associated with the inflows specified in the binding arrangement that better reflect the operator's economic consumption of their access to the service concession asset and/or the time value of money. For example, an annuity method that applies a compounding interest factor that more evenly recognises revenue on a discounted basis, as opposed to on a nominal basis, may be more appropriate for a service concession arrangement with a term extending over several decades.
- AG60. When an upfront payment is received from the operator, the revenue is recognised in a way that best reflects the operator's economic consumption of its access to the service concession asset and/or the time value of money. For example, when the operator is required to pay annual instalments over the term of the service concession arrangement, or predetermined sums for specific years, the revenue is recognised over the specified term.
- AG61. For service concession arrangements under which the operator is granted the right to earn revenue from third-party users of the service concession asset, revenue relates to the inflow of economic benefits received as the services are provided and is therefore recognised on the same basis as the liability is reduced. In these cases, the grantor will often negotiate to include a revenue-sharing provision in the arrangement with the operator. Revenue-sharing as part of a service concession arrangement may be based on all revenue earned by the operator, or on revenue above a certain threshold, or on revenue more than the operator needs to achieve a specified rate of return.
- AG62. The grantor recognises revenue generated from revenue-sharing provisions in service concession arrangements as it is earned, in accordance with the substance of the relevant agreement, after any contingent event (e.g., the achievement of a revenue threshold) is deemed to have occurred. The grantor applies PBE IPSAS 19 to determine when the contingent event has occurred.

- AG63. A reduction in the future predetermined series of payments the grantor would otherwise be required to make to the operator provides the grantor with upfront non-cash consideration. Such revenue is recognised as the liability is reduced.
- AG64. When the operator pays a nominal rent for access to a revenue-generating asset, the rental revenue is recognised in accordance with PBE IPSAS 23 *Revenue from Non-Exchange Transactions*.

Presentation and Disclosure (see paragraphs 31–33)

- AG65. Disclosures relating to various aspects of service concession arrangements may be addressed in existing Standards. This Standard addresses only the additional disclosures relating to service concession arrangements. Where the accounting for a particular aspect of a service concession arrangement is addressed in another Standard, the grantor follows the disclosure requirements of that Standard in addition to those set out in paragraph 32.
- AG66. PBE IPSAS 1 requires finance costs to be presented separately in the surplus or deficit section of the statement of comprehensive revenue and expense. The finance charge determined in accordance with paragraph 21 is included in this item.
- AG67. In addition to the disclosures outlined in paragraphs 31–33, the grantor also applies the relevant presentation and disclosure requirements in other PBE Standards as they pertain to assets, liabilities, revenues, and expenses recognised under this Standard.

Transitional Provisions

- AG68–AG73. [Not used]

Basis for Conclusions on PBE IPSAS 32

This Basis for Conclusions accompanies, but is not part of, PBE IPSAS 32.

BC1. The New Zealand Accounting Standards Board (NZASB) has modified IPSAS 32 *Service Concession Arrangements: Grantor* for application in New Zealand by Tier 1 and Tier 2 public benefit entities. Where applicable, disclosure concessions have been identified for Tier 2 entities and the language generalised for use by public benefit entities. The NZASB considered that the requirements of IPSAS 32 are generally appropriate for application by public benefit entities.

Scope

BC2. The NZASB noted that some service concession arrangements will not fall within the scope of PBE IPSAS 32. The Standard covers existing assets that are used in the service concession arrangement and assets that are created for use in a service concession arrangement. However, it does not address the accounting for an asset that has been created for possible use in a service concession arrangement but which is not yet subject to a service concession arrangement. The NZASB did not propose to modify the scope of IPSAS 32.

Disclosures

BC3. No disclosure concessions have been identified in PBE IPSAS 32. The NZASB is of the view that (i) the disclosures required are appropriate for grantors in service concession arrangements, and (ii) disclosure concessions in other PBE Standards are applicable as a consequence of a grantor applying presentation and disclosure requirements of those standards in accordance with paragraphs AG65–AG67 of this Standard.

Basis for Conclusions on IPSAS 32

BC4. The NZASB decided that the IPSASB's Basis for Conclusions on IPSAS 32 should be included in PBE IPSAS 32 as it contained information that would be useful for entities applying PBE IPSAS 32.

Post-Implementation Review

BC5. The NZASB noted that although respondents generally supported the requirements in PBE IPSAS 32, some expressed the view that further guidance or examples would be helpful. Having regard to the expected low incidence of service concession arrangements in New Zealand, the NZASB agreed that the application of PBE IPSAS 32 should be reviewed once more experience with implementing the Standard is available.

2016 Omnibus Amendments to PBE Standards

BC6. In *Improvements to IPSASs 2015*, the IPSASB amended IPSAS 32 to eliminate the possibility that dissimilar assets might be accounted for as a class of assets under the requirements of IPSAS 32, IPSAS 17 and IPSAS 31. The NZASB incorporated these amendments into PBE IPSAS 32 as part of the *2016 Omnibus Amendments to PBE Standards*.

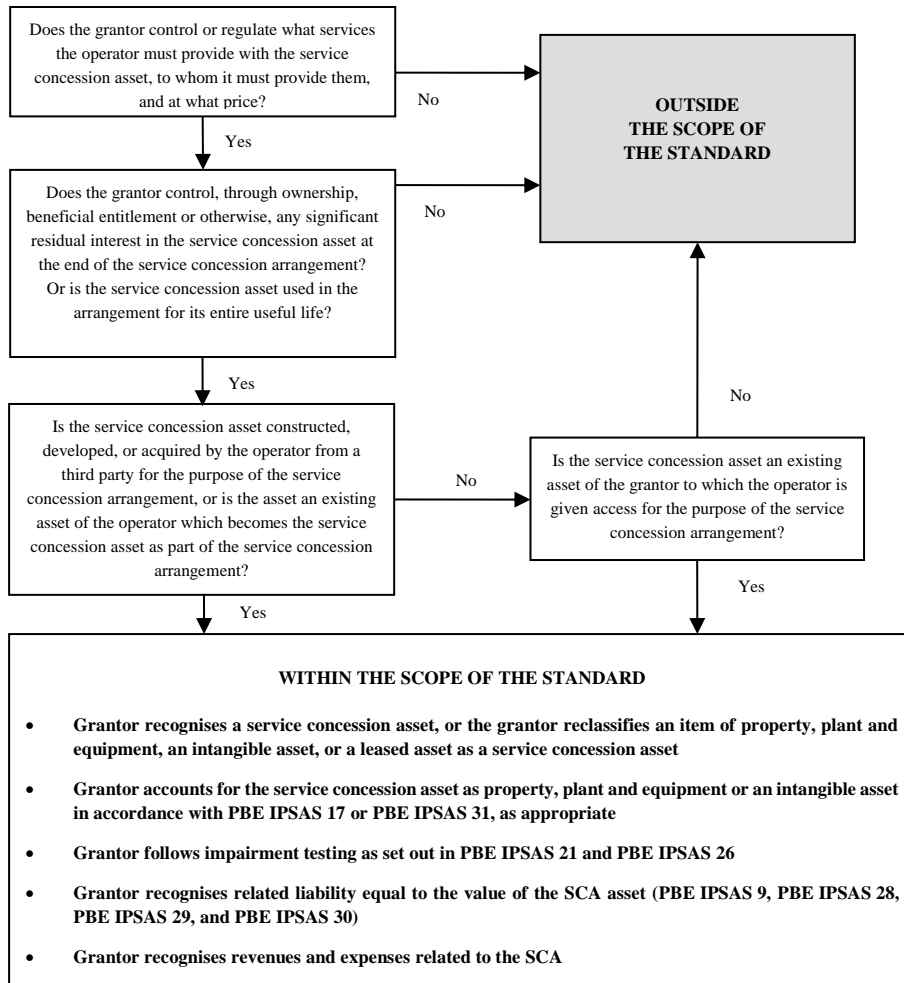
Implementation Guidance

This guidance accompanies, but is not part of, PBE IPSAS 32.

IG1. The purpose of this Implementation Guidance is to illustrate certain aspects of the requirements of PBE IPSAS 32.

Accounting Framework for Service Concession Arrangements

IG2. The diagram below summarises the accounting for service concession arrangements established by PBE IPSAS 32.



References to PBE Standards that Apply to Typical Types of Arrangements Involving an Asset Combined with Provision of a Service

IG3. The table sets out the typical types of arrangements for participation in the provision of public benefit services and provides references to PBE Standards that apply to those arrangements. The list of arrangements types is not exhaustive. The purpose of the table is to highlight the continuum of arrangements. It is not intended to convey the impression that bright lines exist between the accounting requirements for various types of arrangements.

IG4. Shaded text shows arrangements within the scope of PBE IPSAS 32.

| Category | Lessee | Service provider | | | Owner | |
|---------------------------|--|---|--|------------------------|--|---|
| Typical arrangement types | Lease (e.g., operator leases asset from grantor) | Service and/or maintenance contract (specific tasks e.g., debt collection, facility management) | Rehabilitate-operate-transfer | Build-operate-transfer | Build-own-operate | 100% Divestment/Privatisation/Corporation |
| Asset ownership | Grantor | | | | Operator | |
| Capital investment | Grantor | | Operator | | | |
| Demand risk | Shared | Grantor | Grantor and/or Operator | | Operator | |
| Typical duration | 8–20 years | 1–5 years | 25–30 years | | Indefinite (or may be limited by binding arrangement or license) | |
| Residual interest | Grantor | | | | Operator | |
| Relevant PBE Standards | PBE IPSAS 13 | PBE IPSAS 1 | This Standard/PBE IPSAS 17/PBE IPSAS 31/PBE FRS 45 | | PBE IPSAS 17/PBE IPSAS 31 (derecognition) PBE IPSAS 9 (revenue recognition) | |

Illustrative Examples

These examples accompany, but are not part of, PBE IPSAS 32.

IE1. These examples deal with only three of many possible types of service concession arrangements. Their purpose is to illustrate the accounting treatment for some features that are commonly found in practice. To make the illustrations as clear as possible, it has been assumed that the term of the service concession arrangement is only ten years and that the operator's annual receipts are constant over that period. In practice, terms may be much longer and annual revenues may increase with time.

Arrangement Terms (Common to All Three Examples)

IE2. In these examples, monetary amounts are denominated in "currency units" (CU).

IE3. These terms are common to the three examples that follow:

IE4. The terms of the arrangement require an operator to construct a road—completing construction within two years—and maintain and operate the road to a specified standard for eight years (i.e., years 3–10). The arrangement is within the scope of this Standard and the road meets the conditions for recognition of a service concession asset in paragraph 9 (or paragraph 10 for a whole-of-life asset).

IE5. The terms of the arrangement also require the operator to resurface the road when the original surface has deteriorated below a specified condition. The operator estimates that it will have to undertake the resurfacing at the end of year 8 at a fair value of CU110. The compensation to the operator for this service is included in the predetermined series of payments and/or the revenue the operator has the right to earn from the service concession asset or another revenue-generating asset granted to the operator by the grantor.

IE6. It is assumed that the original road surface is a separate component of the service concession asset and meets the criteria for recognition specified in PBE IPSAS 17 when the service concession asset is initially recognised. It is further assumed that there is sufficient certainty regarding the timing and amount of the resurfacing work for it to be recognised as a separate component when the resurfacing occurs.³ It is assumed that the expected cost of the resurfacing can be used to estimate the initial cost of the surface layers recognised as a separate component of the service concession asset. The road surface is therefore recognised as a separate component of the initial fair value of the service concession asset and measured at the estimated fair value of the resurfacing and depreciated over years 3–8. This depreciation period is shorter than that for the road base, and takes into account that resurfacing would ordinarily occur over six years, rather than 25 years. During the construction phase, it is assumed that only the road base is constructed in year 1, and that the road only becomes ready to use at the end of year 2.

IE7. Recognition of the replacement component of the road surface as a separate component of the service concession asset in year 8 also results in an increase in the liability recognised by the grantor. Where the liability relates to the grant of a right to the operator model, additional revenue in respect of this increase is recognised evenly over the term of the arrangement. However, if the expenditure represented an improvement in service potential such as a new traffic lane rather than restoration to original service capability then it would be appropriate to instead recognise revenue relevant to that improvement only once it has occurred.

IE8. At the beginning of year 3, the total fair value of the road is CU1,050, comprised of CU940 related to the construction of the base layers and CU110 related to construction of the surface layers. The fair value of the surface layers is used to estimate the fair value of the resurfacing (which is treated as a replacement component in accordance with PBE IPSAS 17). The estimated life of surface layers (i.e., six years) is also used to estimate the depreciation of the replacement component in years 9 and 10. The total initial fair value of the road is lower than the present value of the series of predetermined payments pertaining to the asset, where applicable.

IE9. The road base has an economic life of 25 years. Annual depreciation is taken by the grantor on a straight-line basis. It is therefore CU38 (940/25) for the base layers. The surface layers are depreciated over 6 years (years 3–8 for the original component, and starting in year 9 for the replacement component). Annual

³ If this was not the case (e.g., where the operator might resurface in future, or might incur additional maintenance over the period of the service concession arrangement), it might not be appropriate to recognise a component.

depreciation related to the surface layers is CU18 (CU110/6). There is no impairment in the value of the road over the term of the service concession arrangement.

- IE10. The operator's cost of capital is not practicable to determine. The rate implicit in the service concession arrangement specific to the asset is 6.18%.
- IE11. It is assumed that all cash flows take place at the end of the year.
- IE12. It is assumed that the time value of money is not significant. Paragraph AG59 provides guidance on methods that may be appropriate where the time value of money is significant.
- IE13. At the end of year 10, the arrangement will end. At the end of the arrangement, the operator will transfer the operation of the road to the grantor.
- IE14. The total compensation to the operator under each of the three examples is inclusive of each of the components of the service concession arrangement and reflects the fair values for each of the services, which are set out in Exhibit 1.
- IE15. The grantor's accounting policy for property, plant and equipment is to recognise such assets using the cost model specified in PBE IPSAS 17.

Exhibit 1: Fair Values of the Components of the Arrangement (Currency Units)

| Contact Component | Fair Value |
|--------------------------------|------------|
| Road – base layers | 940 |
| Road – original surface layers | 110 |
| Total FV of road | 1,050 |
| Annual service component | 12 |
| Effective interest rate | 6.18% |

Example 1: The Grantor makes a Predetermined Series of Payments to the Operator

Additional Terms

- IE16. The terms of the arrangement require the grantor to pay the operator CU200 per year in years 3–10 for making the road available to the public. The total consideration (payment of CU200 in each of years 3–10) reflects the fair values for each of the services indicated in Exhibit 1. These payments are intended to cover the cost of constructing the road, annual operating costs of CU12 and reimbursement to the operator for the cost of resurfacing the road in year 8 of CU110.

Financial Statement Impact

- IE17. The grantor initially recognises the service concession asset as property, plant and equipment at its fair value (total CU1,050, comprised of CU940 related to construction of the base layers and CU110 related to construction of the original surface layers). The asset is recognised as it is constructed (CU525 in year 1 and CU525 in year 2). Depreciation is taken annually (CU56, comprised of CU38 for the base layers and CU18 for the surface layers), starting from year 3.
- IE18. The grantor initially recognises a financial liability at fair value equal to the fair value of the asset under construction at the end of year 1 (CU525). The liability is increased at the end of year 2 to reflect both the fair value of the additional construction (CU525) and the finance charge on the outstanding financial liability. Because the amount of the predetermined payment related to the service component of the service concession arrangement is known, the grantor is able to determine the amount of the payment that reduces the liability. A finance charge at the implicit rate of 6.18% is recognised annually. The liability is subsequently measured at amortised cost, i.e., the amount initially recognised plus the finance charge on that amount calculated using the effective interest method minus repayments.
- IE19. The compensation for the road resurfacing is included in the predetermined series of payments. There is no direct cash flow impact related to the road resurfacing; however, the grantor recognises the resurfacing as an asset when the work is undertaken and recognises depreciation expense of $CU110/6 = CU18$, beginning in year 9.

IE20. The compensation for maintenance and operating the road (CU12) is included in the predetermined series of payments. There is no cash flow impact related to this service expense; however, the grantor recognises an expense annually.

IE21. The costs of services are accounted for in accordance with PBE IPSAS 1.

Overview of Cash Flows, Statement of Other Comprehensive Revenue and Expense, and Statement of Financial Position

IE22. The grantor's cash flows, statement of comprehensive revenue and expense, and statement of financial position over the duration of the arrangement will be as illustrated in Tables 1.1 to 1.3. In addition, Table 1.4 shows the changes in the financial liability.

Table 1.1 Cash Flows (Currency Units)

| Year | 1 | 2 | 3 | 4 | 5 | 6 | 7 | 8 | 9 | 10 | Total |
|----------------------------------|---|---|-------|-------|-------|-------|-------|-------|-------|-------|---------|
| Predetermined series of payments | – | – | (200) | (200) | (200) | (200) | (200) | (200) | (200) | (200) | (1,600) |
| Net inflow/ (outflow) | – | – | (200) | (200) | (200) | (200) | (200) | (200) | (200) | (200) | (1,600) |

Table 1.2 Statement of Comprehensive Revenue and Expense (Currency Units)

| Year | 1 | 2 | 3 | 4 | 5 | 6 | 7 | 8 | 9 | 10 | Total |
|--|---|------|-------|-------|-------|-------|-------|------|------|------|-------|
| Service expense | – | – | (12) | (12) | (12) | (12) | (12) | (12) | (12) | (12) | (96) |
| Finance charge | – | (32) | (67) | (59) | (51) | (43) | (34) | (25) | (22) | (11) | (344) |
| Depreciation – base layers | – | – | (38) | (38) | (38) | (38) | (38) | (38) | (38) | (38) | (304) |
| Depreciation – original surface layer | – | – | (18) | (19) | (18) | (18) | (19) | (18) | – | – | (110) |
| Depreciation – replacement surface layer | – | – | – | – | – | – | – | – | (18) | (19) | (37) |
| Total depreciation | – | – | (56) | (57) | (56) | (56) | (57) | (56) | (56) | (57) | (451) |
| Annual surplus/ (deficit) | – | (32) | (135) | (128) | (119) | (111) | (103) | (93) | (90) | (80) | (891) |
| Other comprehensive revenue and expense | – | – | – | – | – | – | – | – | – | – | – |
| Total comprehensive revenue and expense for the period | – | (32) | (135) | (128) | (119) | (111) | (103) | (93) | (90) | (80) | (891) |

NOTES:

1. Depreciation in years 3–8 reflects the depreciation on the initially-constructed road surface. It is fully depreciated over that period. Depreciation in years 9–10 reflects the depreciation on the new service concession asset component (surface) recognised in year 8.
2. Although these Illustrative Examples use a straight-line depreciation method, it is not intended that this method be used in all cases. Paragraph 76 of PBE IPSAS 17 requires that, “The depreciation method shall reflect the pattern in which the asset’s future economic benefits or service potential is expected to be consumed by the entity.” Likewise, for intangible assets, paragraph 96 of PBE IPSAS 31 requires that, “The depreciable amount of an intangible asset with a finite useful life shall be allocated on a systematic basis over its useful life.”

Table 1.3 Statement of Financial Position (Currency Units)

| Year | 1 | 2 | 3 | 4 | 5 | 6 | 7 | 8 | 9 | 10 |
|--|-------|---------|-------|-------|-------|-------|---------|---------|---------|---------|
| Service concession asset – base layers | 525 | 940 | 902 | 864 | 826 | 788 | 750 | 712 | 674 | 636 |
| Service concession asset – original surface layer | – | 110 | 92 | 73 | 55 | 37 | 18 | – | – | – |
| Service concession asset – replacement surface layer | – | – | – | – | – | – | – | 110 | 92 | 73 |
| Total Service concession asset | 525 | 1,050 | 994 | 937 | 881 | 825 | 768 | 822 | 766 | 709 |
| Cash | – | – | (200) | (400) | (600) | (800) | (1,000) | (1,200) | (1,400) | (1,600) |
| Financial liability | (525) | (1,082) | (961) | (832) | (695) | (550) | (396) | (343) | (177) | – |
| Accumulated comprehensive revenue and expense | – | 32 | 167 | 295 | 414 | 525 | 628 | 721 | 811 | 891 |

NOTES:

1. In this example, the resurfacing occurs as expected in year 8, when the initially-constructed road surface is fully depreciated. If the resurfacing occurred earlier, the initially-constructed road surface would not be fully depreciated, and would need to be derecognised in accordance with PBE IPSAS 17 before the new component of the service concession asset related to the resurfacing is recognised.
2. The new component of the service concession asset related to the resurfacing is recognised in year 8. Years 9–10 reflect depreciation on this additional component (Table 1.2).
3. The financial liability is increased in year 8 for the recognition of the new component of the service concession asset.

Table 1.4 Changes in Financial Liability (Currency Units)

| Year | 1 | 2 | 3 | 4 | 5 | 6 | 7 | 8 | 9 | 10 |
|--|-----|-------|-------|-------|-------|-------|-------|-------|-------|-------|
| Balance brought forward | – | 525 | 1,082 | 961 | 832 | 695 | 550 | 396 | 343 | 177 |
| Liability recognised along with initial service concession asset | 525 | 525 | – | – | – | – | – | – | – | – |
| Finance charge added to liability prior to payments being made | – | 32 | – | – | – | – | – | – | – | – |
| Portion of predetermined series of payments that reduces the liability | – | – | (121) | (129) | (137) | (145) | (154) | (163) | (166) | (177) |
| Liability recognised along with replacement surface layers | – | – | – | – | – | – | – | 110 | – | – |
| Balance carried forward | 525 | 1,082 | 961 | 832 | 695 | 550 | 396 | 343 | 177 | – |

Example 2: The Grantor Gives the Operator the Right to Charge Users a Toll for Use of the Road*Additional Arrangement Terms*

IE23. The terms of the arrangement allow the operator to collect tolls from drivers using the road. The operator forecasts that vehicle numbers will remain constant over the duration of the arrangement and that it will receive tolls of CU200 in each of years 3–10. The total consideration (tolls of CU200 in each of years 3–10) reflects the fair values for each of the services indicated in Exhibit 1, and is intended to cover the cost of constructing the road, annual operating costs of CU12 and reimbursement to the operator for the cost of resurfacing the road in year 8 of CU110.

Financial Statement Impact

IE24. The grantor initially recognises the service concession asset as property, plant and equipment at its fair value (total CU1,050, comprised of CU940 related to construction of the base layers and CU110 related to construction of the original surface layers). The asset is recognised as it is constructed (CU525 in year 1 and CU525 in year 2). Depreciation is taken annually (CU56, comprised of CU38 for the base layers and CU18 for the surface layers, starting in year 3).

- IE25. As consideration for the service concession asset, the grantor recognises a liability under the grant of a right to the operator model for granting the operator the right to collect tolls of CU200 in years 3–10. The liability is recognised as the asset is recognised.
- IE26. The liability is reduced over years 3–10, and the grantor recognises revenue on that basis because access to the service concession asset is expected to be provided evenly over the term of the service concession arrangement from the point at which the asset is capable of providing economic benefits.
- IE27. The compensation for the road resurfacing is included in the tolls the operator expects to earn over the term of the service concession arrangement. There is no direct cash flow impact related to the road resurfacing; however, the grantor recognises the resurfacing as an asset when the work is undertaken and recognises depreciation expense of $CU110/6 = CU18$, beginning in year 9.
- IE28. The compensation for maintenance and operating the road (CU12) is included in the tolls the operator expects to earn over the term of the service concession arrangement. There is no financial statement impact related to this service expense. It does not affect cash flow because the grantor has no cash outflow. It is not recognised as an operating expense because the fair value of the asset and liability initially recognised do not include any service costs the operator may incur.

Overview of Cash Flows, Statement of Comprehensive Revenue and Expense, and Statement of Financial Position

- IE29. The grantor's cash flows, statement of comprehensive revenue and expense, and statement of financial position over the duration of the arrangement will be as illustrated in Tables 2.1 to 2.3. In addition, Table 2.4 shows the changes in the liability.

Cash Flows

- IE30. Because there are no payments made to the operator, there are no cash flow impacts for this example.

Table 2.2 Statement of Comprehensive Revenue and Expense (Currency Units)

| Year | 1 | 2 | 3 | 4 | 5 | 6 | 7 | 8 | 9 | 10 | Total |
|--|---|---|------|------|------|------|------|------|------|------|-------|
| Revenue (reduction of liability) | – | – | 145 | 145 | 145 | 145 | 145 | 145 | 145 | 145 | 1160 |
| Depreciation – base layers | – | – | (38) | (38) | (38) | (38) | (38) | (38) | (38) | (38) | (304) |
| Depreciation – original surface layer | – | – | (18) | (19) | (18) | (18) | (19) | (18) | – | – | (110) |
| Depreciation – replacement surface layer | – | – | – | – | – | – | – | – | (18) | (19) | (37) |
| Total depreciation | – | – | (56) | (57) | (56) | (56) | (57) | (56) | (56) | (57) | (451) |
| Annual surplus/(deficit) and comprehensive revenue and expense | – | – | 89 | 88 | 89 | 89 | 88 | 89 | 89 | 88 | 709 |

NOTES:

1. Depreciation in years 3–8 reflects the depreciation on the initially-constructed road surface. It is fully depreciated over that period.
2. Depreciation in years 9–10 reflects the depreciation on the new service concession asset component (surface) recognised in year 8.
3. The revenue (reduction of the liability) includes revenue from the additional liability (Table 2.3).
4. All revenue is recognised evenly over the term of the arrangement.

Table 2.3 Statement of Financial Position (Currency Units)

| Year | 1 | 2 | 3 | 4 | 5 | 6 | 7 | 8 | 9 | 10 |
|--|-------|---------|-------|-------|-------|-------|-------|-------|-------|-------|
| Service concession asset – base layers | 525 | 940 | 902 | 864 | 826 | 788 | 750 | 712 | 674 | 636 |
| Service concession asset – original surface layer | – | 110 | 92 | 73 | 55 | 37 | 18 | – | – | – |
| Service concession asset – replacement surface layer | – | – | – | – | – | – | – | 110 | 92 | 73 |
| Total Service concession asset | 525 | 1,050 | 994 | 937 | 881 | 825 | 768 | 822 | 766 | 709 |
| Cash | – | – | – | – | – | – | – | – | – | – |
| Liability | (525) | (1,050) | (905) | (760) | (615) | (470) | (325) | (290) | (145) | – |
| Accumulated comprehensive revenue and expense | – | – | (89) | (177) | (266) | (355) | (443) | (532) | (621) | (709) |

NOTES:

- In this example, the resurfacing occurs as expected in year 8, when the initially-constructed road surface is fully depreciated. If the resurfacing occurred earlier, the initially-constructed road surface would not be fully depreciated, and would need to be derecognised in accordance with PBE IPSAS 17 before the new component of the service concession asset related to the resurfacing is recognised.
- The new component of the service concession asset related to the resurfacing is recognised in year 8. Years 9–10 reflect depreciation on this additional component (Table 2.2).
- The liability is increased in year 8 for the recognition of the new component of the service concession asset.

Table 2.4 Changes in Liability (Currency Units)

| Year | 1 | 2 | 3 | 4 | 5 | 6 | 7 | 8 | 9 | 10 |
|--|-----|-------|-------|-------|-------|-------|-------|-------|-------|-------|
| Balance brought forward | – | 525 | 1,050 | 905 | 760 | 615 | 470 | 325 | 290 | 145 |
| Liability recognised along with initial service concession asset | 525 | 525 | – | – | – | – | – | – | – | – |
| Revenue (reduction of liability) | – | – | (145) | (145) | (145) | (145) | (145) | (145) | (145) | (145) |
| Liability recognised along with replacement surface layers | – | – | – | – | – | – | – | 110 | – | – |
| Balance carried forward | 525 | 1,050 | 905 | 760 | 615 | 470 | 325 | 290 | 145 | – |

Example 3: The Grantor Makes a Predetermined Series of Payments to the Operator and Also Grants the Operator the Right to Charge Users a Toll for Use of the Road

Additional Arrangement Terms

IE31. The terms of the arrangement allow the operator to collect tolls from drivers using the road. The operator forecasts that vehicle numbers will remain constant over the duration of the arrangement and that it will receive tolls of CU100 in each of years 3–10. The arrangement also requires the grantor to make a predetermined series of payments to the operator of CU100 annually. The fair value of the right to collect tolls and the predetermined series of payments are considered to compensate the operator equally (i.e., 50% from each form of compensation to the operator).

Financial Statement Impact

IE32. The grantor initially recognises the service concession asset as property, plant and equipment at its fair value (total CU1,050, comprised of CU940 related to construction of the base layers and CU110 related to construction of the original surface layers). The asset is recognised as it is constructed (CU525 in year 1 and CU525 in year 2). Depreciation is taken annually (CU56, comprised of CU38 for the base layers and CU18 for the surface layers).

IE33. As consideration for the service concession asset, the grantor recognises both a liability under the grant of a right to the operator model by granting the operator the right to collect tolls of CU100 in years 3–10, and a financial liability to make payments of CU100 in years 3–10. A liability and a financial

liability are recognised as the asset is recognised at the end of year 1 (CU525). The liability and financial liability are increased at the end of year 2 to reflect both the fair value of the additional construction (CU525) and the finance charge on the outstanding financial liability.

- IE34. The grantor's obligation related to the right granted to the operator to charge tolls and the predetermined payments are regarded as two separate items. Therefore in this arrangement it is necessary to divide the grantor's consideration to the operator into two parts—a liability and a financial liability.
- IE35. The liability of CU525 (recognised evenly at the end of years 1 and 2) is reduced over years 3–10, and the grantor recognises revenue on the same basis because the tolls are expected to be earned evenly over the term of the service concession arrangement from the point at which the asset is capable of providing service benefits.
- IE36. The grantor initially recognises a financial liability at fair value equal to half of the fair value of the asset (CU525), recognised evenly at the end of years 1 and 2; a liability under the grant of a right to the operator model is recognised in an amount equal to the other half of the fair value of the asset. The financial liability is also increased at the end of year 2 by the finance charge on the outstanding financial liability. Because the amount of the predetermined payments related to the service component of the service concession arrangement is known, the grantor is able to determine the amount of the payments that reduces the liability. A finance charge at the implicit rate of 6.18% is recognised annually. The liability is subsequently measured at amortised cost, i.e., the amount initially recognised plus the finance charge on that amount calculated using the effective interest method minus repayments.
- IE37. The operator is compensated for the road resurfacing (CU110) equally through the tolls the operator expects to earn over the term of the service concession arrangement and the series of predetermined payments (i.e., 50% from each). There is no direct cash flow impact related to the road resurfacing; however, the grantor recognises the resurfacing as an asset when the work is undertaken and recognises depreciation expense of $CU110/6 = CU18$, beginning in year 9.
- IE38. The operator is compensated for maintenance and operating the road (CU12) equally through the tolls the operator expects to earn over the term of the service concession arrangement and the predetermined payment (i.e., 50% from each). There is no direct cash flow impact related to this service expense because the grantor has no cash outflow. However, the grantor recognises an expense annually for the portion of the compensation related to the series of predetermined payments (CU6). There is no financial statement impact for the remaining CU6 of this service expense. It is not recognised as an operating expense because the fair value of the asset and liability initially recognised do not include any service costs the operator may incur.
- IE39. The grantor's cash flows, statement of comprehensive revenue and expense, and statement of financial position over the duration of the arrangement will be as illustrated in Tables 3.1 to 3.3. In addition, Table 3.4 shows the changes in the liability and Table 3.5 shows the changes in the financial liability.

Overview of Cash Flows, Statement of Comprehensive Revenue and Expense, and Statement of Financial Position

Table 3.1 Cash Flows (Currency Units)

| Year | 1 | 2 | 3 | 4 | 5 | 6 | 7 | 8 | 9 | 10 | Total |
|----------------------------------|---|---|-------|-------|-------|-------|-------|-------|-------|-------|-------|
| Predetermined series of payments | – | – | (100) | (100) | (100) | (100) | (100) | (100) | (100) | (100) | (800) |
| Net inflow/ (outflow) | – | – | (100) | (100) | (100) | (100) | (100) | (100) | (100) | (100) | (800) |

Table 3.2 Statement of Comprehensive Revenue and Expense (Currency Units)

| Year | 1 | 2 | 3 | 4 | 5 | 6 | 7 | 8 | 9 | 10 | Total |
|--|---|------|------|------|------|------|------|------|------|------|-------|
| Revenue (reduction of liability) | – | – | 73 | 72 | 73 | 72 | 73 | 72 | 73 | 72 | 580 |
| Service expense | – | – | (6) | (6) | (6) | (6) | (6) | (6) | (6) | (6) | (48) |
| Finance charge | – | (16) | (33) | (30) | (26) | (22) | (17) | (12) | (11) | (5) | (172) |
| Depreciation – base layers | – | – | (38) | (38) | (38) | (38) | (38) | (38) | (38) | (38) | (304) |
| Depreciation – original surface layer | – | – | (18) | (19) | (18) | (18) | (19) | (18) | – | – | (110) |
| Depreciation – replacement surface layer | – | – | – | – | – | – | – | – | (18) | (19) | (37) |
| Total depreciation | – | – | (56) | (57) | (56) | (56) | (57) | (56) | (56) | (57) | (451) |
| Annual surplus/(deficit) and comprehensive revenue and expense | – | (16) | (22) | (21) | (15) | (12) | (7) | (2) | – | 4 | (91) |

NOTES:

1. Depreciation in years 3–8 reflects the depreciation on the initially-constructed road surface. It is fully depreciated over that period.
2. Depreciation in years 9–10 reflects the depreciation on the new service concession asset component (surface) recognised in year 8.
3. The revenue (reduction of the liability) includes revenue from the additional liability (Table 3.3).
4. All revenue is recognised evenly over the term of the arrangement.

Table 3.3 Statement of Financial Position (Currency Units)

| Year | 1 | 2 | 3 | 4 | 5 | 6 | 7 | 8 | 9 | 10 |
|--|-------|-------|-------|-------|-------|-------|-------|-------|-------|-------|
| Service concession asset – base layers | 525 | 940 | 902 | 864 | 826 | 788 | 750 | 712 | 674 | 636 |
| Service concession asset – surface layer | – | 110 | 92 | 73 | 55 | 37 | 18 | – | – | – |
| Service concession asset – replacement surface layer | – | – | – | – | – | – | – | 110 | 92 | 73 |
| Total service concession asset | 525 | 1,050 | 994 | 937 | 881 | 825 | 768 | 822 | 766 | 709 |
| Cash | – | – | (100) | (200) | (300) | (400) | (500) | (600) | (700) | (800) |
| Liability | (262) | (525) | (452) | (380) | (307) | (235) | (162) | (145) | (72) | – |
| Financial liability | (263) | (541) | (480) | (416) | (348) | (276) | (199) | (172) | (89) | – |
| Accumulated comprehensive revenue and expense | – | 16 | 38 | 59 | 74 | 86 | 93 | 95 | 95 | 91 |

NOTES:

1. In this example, the resurfacing occurs as expected in year 8, when the initially-constructed road surface is fully depreciated. If the resurfacing occurred earlier, the initially-constructed road surface would not be fully depreciated, and would need to be derecognised in accordance with PBE IPSAS 17 before the new component of the service concession asset related to the resurfacing is recognised.
2. The new component of the service concession asset related to the resurfacing is recognised in year 8. Years 9–10 reflect depreciation on this additional component (Table 3.2).
3. The liability is increased in year 8 for the recognition of 50% of the new component of the service concession asset.
4. The financial liability is increased in year 8 for the recognition of 50% of the new component of the service concession asset.

Table 3.4 Changes in Liability (Currency Units)

| Year | 1 | 2 | 3 | 4 | 5 | 6 | 7 | 8 | 9 | 10 |
|--|-----|-----|------|------|------|------|------|------|------|------|
| Balance brought forward | – | 262 | 525 | 452 | 380 | 307 | 235 | 162 | 145 | 72 |
| Liability recognised along with initial service concession asset | 262 | 263 | – | – | – | – | – | – | – | – |
| Revenue (reduction of liability) | – | – | (73) | (72) | (73) | (72) | (73) | (72) | (73) | (72) |
| Liability recognised along with replacement surface layers | – | – | – | – | – | – | – | 55 | – | – |
| Balance carried forward | 262 | 525 | 452 | 380 | 307 | 235 | 162 | 145 | 72 | – |

Table 3.5 Changes in Financial Liability (Currency Units)

| Year | 1 | 2 | 3 | 4 | 5 | 6 | 7 | 8 | 9 | 10 |
|--|-----|-----|------|------|------|------|------|------|------|------|
| Balance brought forward | – | 263 | 541 | 480 | 416 | 348 | 276 | 199 | 172 | 89 |
| Liability recognised along with initial service concession asset | 263 | 262 | – | – | – | – | – | – | – | – |
| Finance charge added to liability prior to payments being made | – | 16 | – | – | – | – | – | – | – | – |
| Portion of predetermined series of payments that reduces the liability | – | – | (61) | (64) | (68) | (72) | (77) | (82) | (83) | (89) |
| Liability recognised along with replacement surface layers | – | – | – | – | – | – | – | 55 | – | – |
| Balance carried forward | 263 | 541 | 480 | 416 | 348 | 276 | 199 | 172 | 89 | – |

Comparison with IPSAS 32

PBE IPSAS 32 *Service Concession Arrangements: Grantor* is drawn from IPSAS 32 *Service Concession Arrangements: Grantor*. PBE Standards require the presentation of a statement comprehensive revenue and expense. IPSASs require the presentation of a statement of financial performance. Other than the impact of this difference, there are no significant differences between PBE IPSAS 32 and IPSAS 32.

History of Amendments

PBE IPSAS 32 *Service Concession Arrangements: Grantor* was issued in September 2014.

This table lists the pronouncements establishing and substantially amending PBE IPSAS 32. The table is based on amendments issued as at 31 January 2019 other than consequential amendments resulting from early adoption of PBE IFRS 9 *Financial Instruments* and PBE FRS 48 *Service Performance Reporting*.

| Pronouncements | Date issued | Early operative date | Effective date (annual financial statements ... on or after ...) |
|--|-------------|---|--|
| PBE IPSAS 32 <i>Service Concession Arrangements: Grantor</i> | Sept 2014 | Early application is permitted for not-for-profit public benefit entities | 1 April 2015 |
| <i>2016 Omnibus Amendments to PBE Standards</i> | Jan 2017 | Varies | 1 Jan 2017 |
| PBE IFRS 9 <i>Financial Instruments</i> ⁴ | Jan 2017 | Early application is permitted | 1 Jan 2021 |
| PBE FRS 48 <i>Service Performance Reporting</i> ⁵ | Nov 2017 | Early application is permitted | 1 Jan 2021 |
| <i>2018 Omnibus Amendments to PBE Standards</i> | Nov 2018 | – | – ⁶ |

| Table of Amended Paragraphs in PBE IPSAS 32 | | |
|---|--------------|--|
| Paragraph affected | How affected | By ... [date] |
| Paragraph 13 | Amended | <i>2016 Omnibus Amendments to PBE Standards</i> [Jan 2017] |
| Paragraph 32 | Amended | <i>2016 Omnibus Amendments to PBE Standards</i> [Jan 2017] |
| Paragraph 33 | Amended | <i>2016 Omnibus Amendments to PBE Standards</i> [Jan 2017] |
| Paragraphs 35A–35B | Added | <i>2016 Omnibus Amendments to PBE Standards</i> [Jan 2017] |
| Paragraph 37.2 | Added | <i>2016 Omnibus Amendments to PBE Standards</i> [Jan 2017] |
| Paragraph 37.3 | Added | <i>2016 Omnibus Amendments to PBE Standards</i> [Jan 2017] |
| Paragraph AG20 | Amended | <i>2016 Omnibus Amendments to PBE Standards</i> [Jan 2017] |
| Paragraph AG35 | Amended | <i>2016 Omnibus Amendments to PBE Standards</i> [Jan 2017] |

⁴ PBE IFRS 9 has not been compiled.

⁵ PBE FRS 48 has not been compiled.

⁶ These amendments did not have an effective date. They were effective immediately.